



COUNTRY[®] STOVES

A LIFETIME OF WARMTH



WOOD FIREPLACE **INSERTS**

“Country Stoves has always been a company passionate about creating quality, warmth, and comfort. For 28 years, this passion has been handcrafted into each stove. That’s why thousands of families have trusted us with providing the warmth and comfort they were looking for. By owning a Country Stove, you too can experience the passion, performance, and warmth that is Country.”

Wishing you a lifetime of warmth, *R.B. Schif*

FROM OUR FAMILY TO YOURS

At Country, we take family seriously.

Country Stoves is one of the few manufacturers of stoves that remains independently owned and operated. It’s a family business – has been since its inception in 1977 – and remains today proudly independent and operated by the same family. Our reputation is built on beautiful, innovative hearth products that stand the test of time.

Every stove that leaves our plant, wood, gas, or pellet, is built as if it will be our home it’s heating, our family it keeps warm and cozy. That’s the way it’s always been done at Country. We remain dedicated to incorporating the latest technology and design to make our products the most efficient, reliable, environmentally friendly, and beautiful products on the market today.

We’ve grown and changed over the years, but we haven’t lost what made us successful to begin with – a dedication to providing you and your family a lifetime of warmth.

That’s a commitment from our family to yours.



LIMITED LIFETIME WARRANTY

We are proud to stand behind our stoves and we prove it by offering a Limited Lifetime Warranty on all of our products. See your Country Stoves professional for more details.

ANATOMY OF A COUNTRY WOOD STOVE:

At Country, we are dedicated to the clean and efficient use of wood, our renewable resource. Today, the Country name is virtually synonymous with quality built, clean burn technology – our wood stoves are all EPA Phase II certified. Each Country wood stove is built with an exclusive non-catalytic combustion system that not only burns the wood, but also the smoke, providing clean emissions, a clear viewing window, and extra heat. Using a unique combination of premium grade materials, quality craftsmanship, and cutting-edge technology we ensure that every wood stove we make will provide a lifetime of warmth.

1 Ceramic Fiber Blanket

This technology developed by the engineers at NASA, but introduced to the hearth industry by Country Stoves, has 10 times the insulation value of firebrick. It radiates heat back into the firebox, creating higher efficiencies and cleaner glass.

2 Refractory Baffle

The unique design assists in igniting fuel rich gases, increasing efficiency and reducing emissions.

3 Integral Airwash System

Preheated primary combustion air enters the firebox and sweeps across the viewing glass, keeping the glass clean and clear for less maintenance and a wide open view of the fire.

4 Secondary Combustion

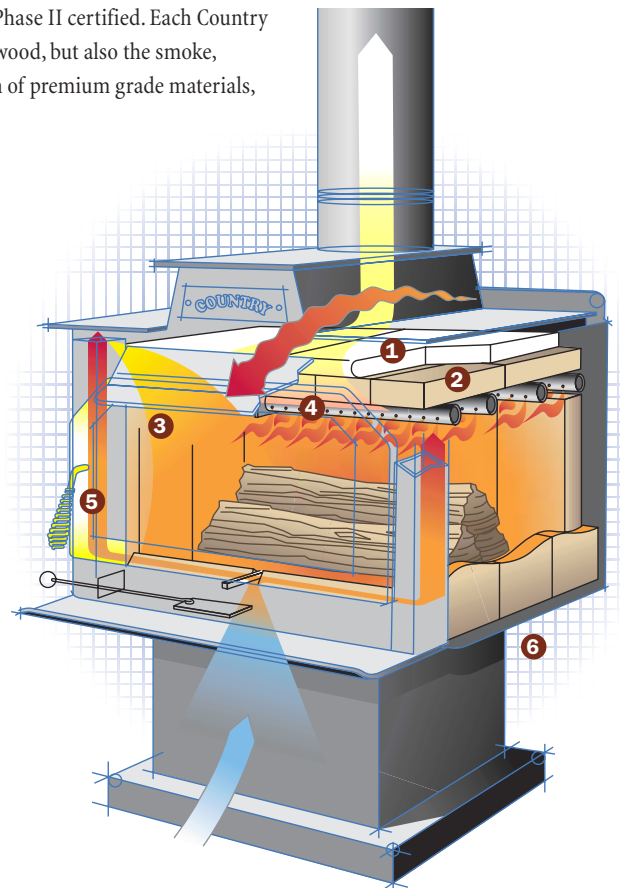
Stainless steel afterburner tubes mix oxygen with unburned gases and smoke to create a secondary burn providing clean emissions and utilizing a previously wasted fuel source. By igniting “waste gases” your Country wood stove will get more heat out of every log, and keep your fuel costs low.

5 Heavy Duty Door

The beauty of this feature lies in its simplicity. The machined door handle has no nuts or washers to loosen or wear and the glass is sandwiched between the two-piece cast-iron door forming a 360° seal that will last for years.

6 Premium Materials

The exterior of every Country wood stove is made from heavy gauge steel and all critical parts inside the firebox are made of stainless steel for long service life.



Country's Fireplace Insert Series provide a popular and efficient alternative for masonry or factory built fireplaces.

STRIKER C160 – Small [600–1,300 sq.ft. heating capacity]

The Striker C160 is a beautiful way to turn your small masonry or factory built fireplace into an efficient home heater. At 1.6 EPA grams per hour, the Country C160 is one of the cleanest and most efficient non-catalytic wood inserts ever made. Available with your choice of Arch or Traditional door and a variety of finishes.

**The house is finally warm.
It is so relaxing to simply
sit and watch the fire.**
— Michel L., PA

C160 SPECIFICATIONS:

LOG LENGTH	18" Max./16" Rec.	FIREBOX	18"W x 14"D
CHIMNEY DIAMETER	6"	APPROXIMATE WEIGHT	320 lbs.
INSERT FRONT WIDTH	23 1/8"	COMBUSTION SYSTEM	Non-catalytic
INSERT FRONT HEIGHT	18 1/2"	ESTIMATED HEATING CAPACITY**	600–1,300 sq. ft.
REAR WIDTH	23 1/2"	MAX. OUTPUT/CORD WOOD**	68,000 BTUs/hr.
REAR HEIGHT	19 1/4"	MAX. BURN TIMES**	6–8 hrs.
EPA GRAMS PER HOUR	1.6		
OREGON DEQ EFFICIENCY	70.2%		



CA160 shown with cast black Arch door.

STRIKER C160



CA160 shown with gold plated Arch door and gold flange trim/screws.

PERFORMER C210

PERFORMER C210 – Medium [1,000–1,800 sq.ft. heating capacity]

Slightly larger than the C160, the Performer C210 offers increased heat output and easier loading. For moderate heating needs the Country Performer C210 is the smart and efficient choice. Available with your choice of Arch or Traditional door and a variety of finishes.

C210 SPECIFICATIONS:

LOG LENGTH	20" Max./18" Rec.	FIREBOX	20"W x 18"D
CHIMNEY DIAMETER	6"	APPROXIMATE WEIGHT	400 lbs.
INSERT FRONT HEIGHT	18"	COMBUSTION SYSTEM	Non-catalytic
INSERT FRONT WIDTH	25"	ESTIMATED HEATING CAPACITY**	1,000–1,800 sq. ft.
REAR WIDTH	25 1/2"	MAX. OUTPUT/CORD WOOD**	76,000 BTUs/hr.
REAR HEIGHT	19"	MAX. BURN TIMES**	7–9 hrs.
EPA GRAMS PER HOUR	4.2		
OREGON DEQ EFFICIENCY	67.1%		

**Heating Capacities based on 70° 3 ft. above the floor with 8 ft. ceilings. Cubic Feet = Sq. Ft. x 8'. Heat output, heating capacities and burn times will vary depending on fuel type, chimney performance, climate conditions, burning habits, home insulation value and installation.



C210 shown with gold plated Traditional door, black blower and gold flange trim/screws. All UHP blowers come with a 6 ft. electrical cord not shown in this photo.

**I like the attractiveness,
heat and efficiency. I
looked at a lot of stoves
and Country won hands-
down. — Harold H., OR**

C210

C260

LEGACY C260 – Large [1,200–2,200 sq.ft. heating capacity]

With a heating capacity of 1,200–2,200 sq. ft. and maximum log length of 22-1/2", the Legacy C260 is the ideal choice for serious heating needs. Add an optional 225 CFM blower (blowers are available for all Country wood inserts) for more even heat throughout your home. Available with a Traditional door and a variety of finishes.



C260 shown with brushed nickel Traditional door, blower and nickel flange trim/screws.

C260 SPECIFICATIONS:

LOG LENGTH	22 1/2" Max./20" Rec.	OREGON DEQ EFFICIENCY	68.2%
CHIMNEY DIAMETER	6" or 8"	APPROXIMATE WEIGHT	493 lbs.
INSERT FRONT WIDTH	28"	COMBUSTION SYSTEM	Non-catalytic
INSERT FRONT HEIGHT	20 1/2"	ESTIMATED HEATING CAPACITY**	1,200–2,200 sq. ft.
REAR WIDTH	28 1/2"	MAX. OUTPUT/CORD WOOD**	79,000 ft.BTUs/hr.
REAR HEIGHT	22 1/2"	MAX. BURN TIMES**	7–11 hrs.
EPA GRAMS PER HOUR	4.1		
FIREBOX	22 1/2"W x 17 1/2"D		

“100% Quality!
Wish I had gotten one
twenty years ago.
—Elizabeth B., CA”

LEGACY C260



C260 shown with black Traditional door, blower, flange trim and nickel flange screws.

CANYON C310

CANYON C310 – Extra-Large [1,600–3,000 sq.ft. heating capacity]

The Canyon C310 is the largest wood insert produced by Country Stoves. When you need to heat a large area and want long burn times (7–12 hrs.), the Canyon C310 is the right choice. Available with a Traditional door and a variety of finishes.

C310 SPECIFICATIONS:

LOG LENGTH	22 1/2" Max./ 20" Rec.	OREGON DEQ EFFICIENCY	68.6%
CHIMNEY DIAMETER	6" or 8"	APPROXIMATE WEIGHT	547 lbs.
INSERT FRONT WIDTH	28"	COMBUSTION SYSTEM	Non-catalytic
INSERT FRONT HEIGHT	20 1/2"	ESTIMATED HEATING CAPACITY**	1,600–3,000 sq.ft.
REAR WIDTH	28 1/2"	MAX. OUTPUT/CORD WOOD**	84,500 ft.BTUs/hr.
REAR HEIGHT	22 1/2"	MAX. BURN TIMES**	7–12 hrs.
EPA GRAMS PER HOUR	3.2		
FIREBOX	22 1/2"W x 19 1/2"D		

“We love the looks,
operation and output
of heat that warms
our entire home.
— Isabella G., CO”



C310 shown with gold plated Traditional door, black blower and gold flange trim.

**Heating Capacities based on 70° 3 ft. above the floor with 8 ft. ceilings. Cubic Feet = Sq. Ft. x 8'. Heat output, heating capacities and burn times will vary depending on fuel type, chimney performance, climate conditions, burning habits, home insulation value and installation.

C310

ELITE E260 – Large

[1,200–2,200 sq.ft. heating capacity]

The Elite, a bay version of the C260, comes standard with features such as a gold plated door, diamond-etched glass, and gold plated side bay mirrors. But don't let the beautiful exterior fool you.

The Elite E260 is still a serious heater and offers unsurpassed reliability and performance. Also available with plain glass and in nickel finishes.

E260 SPECIFICATIONS:

LOG LENGTH	22 1/2" Max./ 20" Rec.
CHIMNEY DIAMETER	6" or 8"
INSERT FRONT WIDTH	48"
INSERT FRONT HEIGHT	21 5/8"
REAR WIDTH	28 1/2"
REAR HEIGHT	22 1/2"
EPA GRAMS PER HOUR	4.1
FIREBOX	22 1/2"W x 17 1/2"H
OREGON DEQ EFFICIENCY	68.2%
APPROXIMATE WEIGHT	560 lbs.
COMBUSTION SYSTEM	Non-catalytic
ESTIMATED HEATING CAPACITY**	1,200–2,200 sq.ft.
MAX. OUTPUT/CORD WOOD**	79,000 ft. BTUs/hr.
MAX. BURN TIMES**	7–11 hrs.

**Heating Capacities based on 70° 3 ft. above the floor with 8 ft. ceilings. Heat output, heating capacities and burn times will vary depending on fuel type, chimney performance, climate conditions, burning habits, home insulation value and installation.



Elite 260 shown in custom metallic brown paint with standard gold plated door, flange trim, side bay mirrors, and diamond etched glass. Shown with optional gold plated flange screws and blower.

ELITE E260



E260 shown with nickel Traditional door, blower, side bay mirrors, plain glass, black flange trim and nickel flange screws.

HOW TO BUILD YOUR CUSTOM COUNTRY WOOD INSERT...

Follow these 5 simple steps to customize the look and performance of your Country wood insert.

1 Choose the wood insert that matches your heating needs

Heat output and heating capacities will vary depending on installation and your individual home – ask your dealer for selection assistance.

Inserts

- C160 (Choose – Arch or Traditional Door)
- C210 (Choose – Arch or Traditional Door)
- C260, E260, C310 (Traditional Door only)

2 Choose door style and finish

Door Style

- Traditional Door (available on all models)
- Arch Door (available on C160 and C210 only)

Finish

- Black, 24-karat gold plating, brushed gold plating, nickel plating, or brushed nickel plating (E260 only available with gold or nickel finish)

3 Choose glass

- Plain
- Etched – Cattails, Floral, Sails, or Evergreen

4 Choose the flange

Flange Size – Flange must be slightly larger than fireplace opening, ask your dealer for selection assistance.

- Standard or Oversized (See specifications page)

Flange Trim and Screw Options

- Black, gold, or nickel

5 Add a UHP blower for more even heat?

Select Blower Finish

- Black, 24-karat gold plating, brushed gold plating, nickel plating or brushed nickel plating.

DOOR OPTIONS



Traditional Door



Arch Door

GLASS OPTIONS



Cattails



Floral



Sails

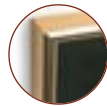


Evergreen

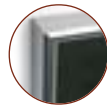
TRIM OPTIONS



Black



24K Gold Plating



Nickel Plating

Black flange trim screws are standard. Optional gold or nickel plated screws available.

BLOWER OPTIONS



All Country fireplace inserts may be fitted with an optional variable speed blower (310 & 260 inserts – 225 CFM blower / 210 & 160 inserts – 160 CFM blower). All blowers come with a 6 foot long electrical cord.

WOOD FIREPLACE Insert SPECIFICATIONS

NOTICE: Specifications are for reference only and shall not be used for actual installation. Use installation manual for actual specifications.



**C160
STRIKER**



**C210
PERFORMER**



**C260
LEGACY**



**E260
ELITE**



**C310
CANYON**

SPECIFICATIONS

	C160	C210	C260	E260	C310
FRONT WIDTH	23 1/8"	25"	28"	48"	28"
REAR WIDTH (REAR TAPER WIDTH)	23 1/2" {21 1/2"}*	25 1/2" {23"}*	28 1/2"*	28 1/2"*	28 1/2"*
FRONT HEIGHT	18 1/2"	18"	20 1/2"	21 5/8"	20 1/2"
REAR HEIGHT (H)	19 1/4"	19"	22 1/2"	22 1/2"	22 1/2"
DEPTH INTO FIREPLACE (G)	12 1/2"	12 1/4"	14 1/2"	14 1/2"	14 1/2"
FLUE DIAMETER (NOTE 1)	6"	6"	6" or 8"	6" or 8"	6" or 8"
DEPTH ONTO HEARTH (F)	4 1/2"	9"	6 1/2"	6 1/2"	9"
APPROXIMATE WEIGHT	320 lbs.	400 lbs.	493 lbs.	560 lbs.	547 lbs.

NOTE 1: Consult your Dealer or professional installer for recommended chimney sizes for your application. C260, E260 and C310 require 6" reducer for use with 6" Chimney. *Leveling nuts extend outside this dimension.

CLEARANCES Any reduction of listed clearances must be done as per NFPA211 and local building official.

A = Insert Top to Combustible Mantel **	24"	24"	30"	23"	30"
B = Insert Top to Top Facing **	15"	18"	20"	17"	20"
C = Insert Side to Side Facing **	12"	15"	15"	4"	15"
D = Insert Side to Side Wall **	20"	18"	20"	9"	20"
E = Hearth in front of Insert (NOTE 2)	18"	18"	16"	22"	24"
M = Minimum Mantel Height From Bottom of Insert	42 1/2"	42"	50 1/2"	45"	50 1/2"

FIREPLACE SIZING

Minimum Depth	12 3/4"	12 1/2"	14 3/4"	14 3/4"	14 3/4"
Minimum Height {ZC=Zero Clearance}	19 1/2" {21"ZC}	19 1/4" {21"ZC}	22 3/4"	22 3/4"	22 3/4"
Minimum Width {ZC=Zero Clearance}	25 1/2" {36"ZC}	26" {36"ZC}	30 1/2"	30 1/2"	30 1/2"
J = Maximum Mantel Depth (w/out use of adjustable offset box)	4 3/4"	4 1/2"	5 1/4"	5 3/4"	5 1/4"

SURROUND FLANGE SIZING

Standard Size	26 1/2"H x 40"W	26 1/2"H x 40"W	29"H x 40"W	29"H x 48"W	29"H x 40"W
	26 1/2"H x 48"W	26 1/2"H x 48"W	29"H x 48"W	N/A	29"H x 48"W
Oversized	30 1/2"H x 40"W	30 1/2"H x 40"W	33"H x 40"W	32"H x 48"W	33"H x 40"W
	30 1/2"H x 48"W	30 1/2"H x 48"W	33"H x 48"W	N/A	33"H x 48"W

NOTE 2: For each 2" the hearth is raised above flooring, hearth requirement may be reduced by 2". 16" minimum in all installations. E + F = Total hearth extension required from opening of fireplace.

ZERO CLEARANCE FACTORY-BUILT

FIREPLACE APPROVAL

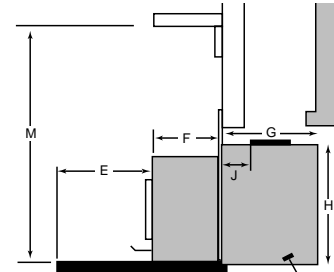
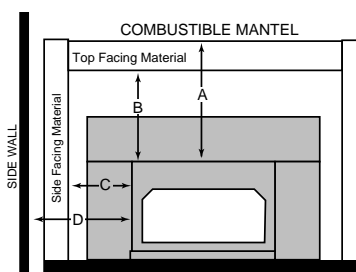
C160 and C210: Approved for installation into the following factory built wood burning fireplaces - Heatilator, Majestic, Superior, Martin, Preway, Marco, Temco and FMI with a minimum of 36-inches in width at cavity opening and 21-inches of height. Refer to owners manuals for more details.

CHIMNEY REQUIREMENTS

C160 and C210: Installation in a zero clearance factory-built wood burning fireplace requires a stainless extension from the flue outlet fully into the chimney of the fireplace. A full length liner is recommended for optimum performance and safety.

All Inserts: Approved with or without positive flue connection in masonry fireplaces. For maximum safety and performance we recommend full length stainless steel chimney liners, especially in factory-built fireplaces. Ask your dealer or professional installer for the recommended chimney size to use for your application.

Country Stoves reserves the right to alter or improve its products without notice. Inserts are tested to U.L. 1482.



**Reductions may be available for A, B, C, & D dimensions. See owners manual or ask your dealer. Shielding must be used. NOTE: Combustible material projecting more than 3/4" from wall above or beside the insert shall be considered mantel or sidewall.

COUNTRY STOVES
A LIFETIME OF WARMTH

www.countrystoves.com

Country Stoves, Inc., P.O. Box 959, Auburn, WA 98071-0959

